

OPTOGAIT GAIT ANALYSIS SYSTEM



Optogait is an innovative system for motion analysis and functional assessment of patients with normal or pathological conditions.

The system is equipped with optical sensors operating at 1000 Hz frequency and with a sensitivity of 1 cm, which determines the relevant field and time parameters for walking, running or other test types.

Objective measurement of such data, along with an integrated video system, allows a patient's condition to be monitored constantly, to identify problem areas, to assess mechanical inefficiencies, and to confirm the presence of asymmetry between two legs.

The systems range from 1 to 100 meters. When paired with a standard treadmill, all aspects of the walking cycle can be examined. Parameters (eg, contact time, flight time, and pre-oscillation) can be measured in .001 seconds. Left and right differentials are recorded. Precise objective data are correlated to determine the degree of injury and the effectiveness of treatment.



Areas of use: The system can perform 45 different tests. Walking analysis is used where necessary. It is used to follow the performances of the athletes, to reduce the athletes' injuries the most, to reduce the rehabilitation period to the minimum after the athletes are injured. For physiotherapists, SP, Hemiplegia, etc. provide reference values in the kinesiological evaluation of muscle groups in patients.

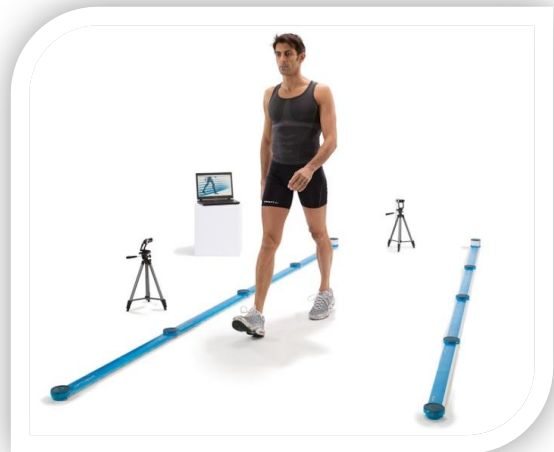
Treadmill System



The patient is walking at a slow pace. Monitor the parameters of the walking cycle in real time. Contact time, flight time, swing, etc. Make left and right comparisons. When you increase your hospital's speed, note that the asymmetry has improved or worsened. When maximum efficiency is achieved, record the speed of asymmetry and running band. This efficient 'walking rhythm' is a good starting point for clinical intervention. Shoe, orthotic, conditioning exercises, etc. to increase the symmetry of the patient. Available. Given the needs of the patient, gait protocols can be performed at any rate.

Length and installation

Optogait can be expanded up to 100 mt to start 1 mt. It is an easy mobile system to move and install. The recommended length is 3 mt.



Easy to carry mobile system

